



**SPENCE**  
Neighbourhood  
ASSOCIATION

# NEWSLETTER

**OCTOBER 2022**



## Holistic Housing

### Homeless Outreach Mentor and Homeless Outreach Worker Program

The Homelessness Outreach Mentor (HOM) and the Homeless Outreach Workers for Youth (HOW) provides help to community members that are experiencing homeless by providing assistance in accessing resource support, finding a place to live, providing housewares and providing wraparound support. The HOM and HOW program works to build relationships with landlords, advocate for participants with Employment & Income Assistance, Child & Family services, and medical services to help them transition from homeless to housed.

For many of our participants they are being housed in the first time or have potentially not had a home for a long time. The HOM and HOW program accesses many different resources to ensure that participants have everything they need in their home to be comfortable and safe. Participants are provided dishes, small appliances, towels, and cleaning supplies. Most of which are donated by generous community members. Participants are also provided a bed through a partnership with Sleep Country Canada. However, we are not always able to provide these items to participants due to donation shortages.

The HOM and HOW program also offers wrap around support for a period of 6 months. This includes; monthly home visits, teaching them life skills such as: budgeting, grocery shopping, problem solving, scheduling and/or accompanying the individual for/to appointments, communication skills, personal health and wellness skills. As well as connecting the individual to other Community Supports to help the individual gain a good quality of life and independence.

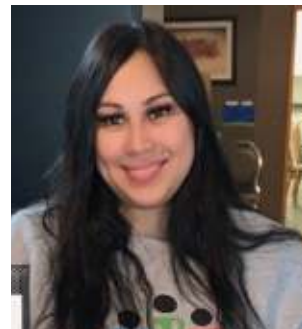
To do an intake with the HOM Program  
please contact

Jasmine @ 204-999-4485 or email at row@spenceneighbourhood.org

To do an intake with our HOW workers you must be between the ages of 18-29 and be a participant of our WE 24 Safe Space.

Please note that if case load is full, you will be put on a waiting list or referred to another housing agency.

If you have household items you would like to donate please drop them off at 615 Ellice ave between 10 am - 4 pm.



**Jasmine**  
**Homelessness**  
**Outreach Mentor**



**Eternity**  
**WE24 Housing**  
**Worker**



**Jefferson**  
**WE24 Housing**  
**Worker**

## IN THIS ISSUE

PAGE 2 - NEWS  
PAGE 3 - RESOURCES  
RESOURCES/PROGRAMS/SERVICES  
DONATIONS NEEDED  
PAGE 4 - PROGRAMS



COMMUNITY COMMITTEE MEETING ONLINE  
KEEP YOUR EYE ON SOCIAL MEDIA FOR NEXT DATE!  
FOR MORE INFORMATION VISIT OUR WEBSITE AT  
[WWW.SPENCENEIGHBOURHOOD.ORG](http://WWW.SPENCENEIGHBOURHOOD.ORG)  
OR EMAIL THE COMMITTEE CONTACT PERSON  
LISTED ON PAGE 4

## Community Greenhouse

Beautiful colours, swirling leaves and cooler air...must be fall again! A time to give thanks for the harvests, and prepare for the winter to come (and of course Hallowe'en!)

In your community gardens, we are busy putting the beds to bed by pulling up plants, adding compost & mulch. Time to plant wildflower seeds, plant bulbs like garlic & tulips. Meanwhile, inside the community greenhouse we are hoping for at least 2 more months of growing. Kohlrabi, melons & herbs are on the go.

If you have a lawn, it may also be a time for raking up leaves. We recommend skipping the work, and leaving (ha!) them to decompose naturally. This will help fertilize your lawns, while improving habitat for beneficial insects.

If you do rake & bag, please drop off leaves at any community garden in the neighbourhood. They can add carbon to the compost heaps, or be used as mulch on garden beds.

We are currently organizing a series of workshops, to keep your green thumbs warm over winter. If you have particular interests or ideas for topics, please get in touch.

Contact [greenhouse@spenceneighbourhood.org](mailto:greenhouse@spenceneighbourhood.org) for more information, or to volunteer.

**Housing Team  
is looking for Landlords  
in and around the Spence Area**

**PLEASE CONTACT RYAN  
IF YOU WOULD LIKE MORE INFORMATION  
EMAIL:  
RYANM@SPENCENEIGHBOURHOOD.ORG  
CELL: 204-979-9169**

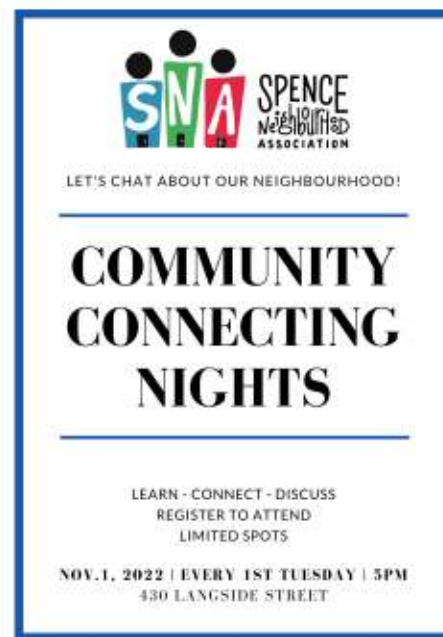
Want to advertise in our newsletter? Go to [spenceneighbourhood.org/get-involved/newsletter](http://spenceneighbourhood.org/get-involved/newsletter) for more information.

## Community Connecting

Community connecting nights will consist of a series of in-person gatherings that aim to give community members an opportunity to learn, connect and get involved. They will be held on the first Tuesday of every month with the first few being hosted at the Magnus Eliason Recreation Centre at 430 Langside Street. A main component of the program is to help educate community members about specific issues in the community and how we can work together to address them. The event will feature presentations, performances, food and free roam style discussion groups at the end of the event for more specific information. Seating is limited so register quickly.

Hope to see you there!

Register from SNA Website. Spence Neighbourhood.org



**Mail Pick Up &  
430 Langside  
(MERC)  
Monday - Friday  
10 am - 2 pm**

### Spence Neighbourhood Association (SNA):

Website: [www.spenceneighbourhood.org](http://www.spenceneighbourhood.org)

**615 Ellice Avenue (Head Office):**

Community Connecting, Environment & Open Spaces, Finance, Homeless Outreach, & Housing

**430 Langside Street (Magnus Eliason Recreation Centre - MERC):**

Building Belonging, Children, Newcomer Youth Outreach, West End 24 Hour Safe Space, & Youth Drop-In

**365 McGee Street (West End Commons):**

Youth Employment Hub, First Jobs 4 Youth, & Youth Centre

**231 Isabel Street (Central Neighbourhoods):**

Gang Action Interagency Network (GAIN)

**350 Spence Street (Axworthy Health & RecPlex):**

Community Sports Program

Email: [liaison@spenceneighbourhood.org](mailto:liaison@spenceneighbourhood.org)





## CALLING ALL LANDLORDS

DO YOU NEED HELP RENTING OUT YOUR UNITS?

COME PARTNER WITH THE SNA HOLISTIC HOUSING TEAM!!

- 6 MONTH WRAP AROUND SUPPORTS FOR TENANTS WE HOUSE WITHIN YOUR BUILDINGS
- LANDLORD/TENANT ADVOCACY & MEDIATION
- BED BUG SUPPORT

PLEASE CONTACT JASMINE

IF YOU WOULD LIKE MORE INFORMATION OR IF YOU ARE INTERESTED IN PARTNERING

EMAIL: [ROW@SPENCENEIGHBOURHOOD.ORG](mailto:ROW@SPENCENEIGHBOURHOOD.ORG)

CELL: 204-999-4485

### Looking to have your gang tattoo removed?



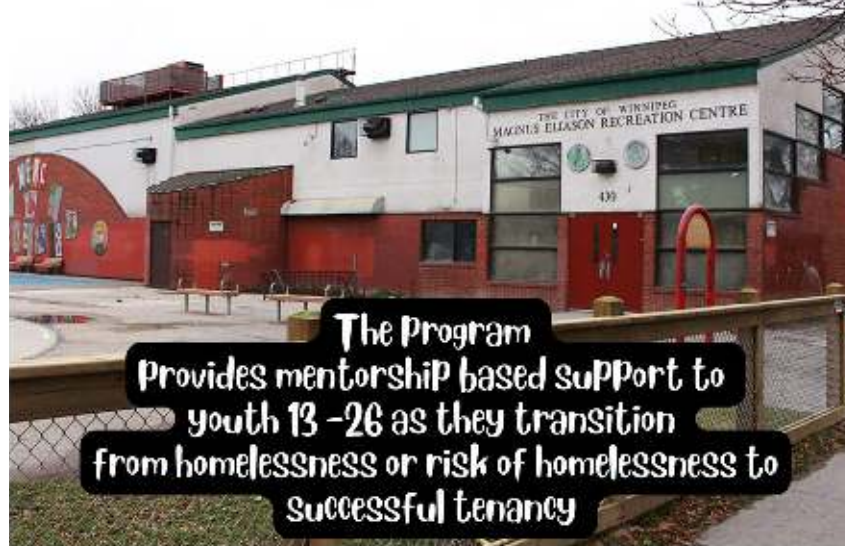
G.A.I.N is offering free gang tattoo removal service

FOR MORE INFORMATION contact:

[ryan@spenceneighbourhood.org](mailto:ryan@spenceneighbourhood.org)



## ARE YOU A WE24 PARTICIPANT? ASK US ABOUT THE WE24 HOUSING OUTREACH PROGRAM



The Program Provides mentorship based support to youth 13 - 26 as they transition from homelessness or risk of homelessness to successful tenancy



+ Assist with housing support/information

+ Information about services and resources for youth

+ CIA, RTB advocacy

+ Wrap around support



Eternity Littlejohn  
204-898-1390

[eternity@spenceneighbourhood.org](mailto:eternity@spenceneighbourhood.org)

430 Langside Street  
Monday & Tuesday 8:00 pm - 2:30 am

615 Ellice Avenue  
Thursday & Friday 9:00 am - 4:30 pm

Jefferson McPherson  
204-898-3235

[jefferson@spenceneighbourhood.org](mailto:jefferson@spenceneighbourhood.org)

430 Langside Street  
Thursday & Friday 8:00 pm - 2:30 am

615 Ellice Avenue  
Monday & Tuesday 9:00 am - 4:30 pm



## Donations Needed! WE24

Jackets, Brand new underwear, Socks, Shoes/Boots, Toothbrushes, Tooth Paste, Deodorant, Soap, Razors & Bottled Water.

All donations can be dropped off at 430 Langside (MERC) or contact Chantel at

[donations@spenceneighbourhood.org](mailto:donations@spenceneighbourhood.org)

Thank You!

Spence Neighbourhood Association (SNA):

Website: [www.spenceneighbourhood.org](http://www.spenceneighbourhood.org)

615 Ellice Avenue (Head Office):

Community Connecting, Environment & Open Spaces, Finance, Homeless Outreach, & Housing

430 Langside Street (Magnus Eliason Recreation Centre - MERC):

Building Belonging, Children, Newcomer Youth Outreach, West End 24 Hour Safe Space, & Youth Drop-In

365 McGee Street (West End Commons):

Youth Employment Hub, First Jobs 4 Youth, & Youth Crew

231 Isabel Street (Central Neighbourhoods):

Gang Action Interagency Network (GAIN)

350 Spence Street (Axworthy Health & RecPlex):

Community Sports Program

Email: [liaison@spenceneighbourhood.org](mailto:liaison@spenceneighbourhood.org)



# PROGRAMS

## Building Belonging

Our School Year 2022-2023 program for ages 6-12 at the Magnus Eliason Recreation Centre (430 Langside St.) runs Monday to Friday, 3:30-5:30pm, with a daily meal, structured activities and pickup from John M King and Sister Mac schools and walk or drive home available. Registration forms are available at the M.E.R.C or on the Spence Neighbourhood Association website. Contact us at [buildingbelonging@spenceneighbourhood.org](mailto:buildingbelonging@spenceneighbourhood.org)

## Newcomer Youth/Youth Drop In Program

Our in person Youth Drop In program is happening this fall from Monday to Friday from 6:30 pm till 9:00 p.m. Join us for a snack, basketball, soccer, volleyball, or some fun arts and crafts activities. Transportation provided at the end of the program. Have any questions? Contact us at [newcomer@spenceneighbourhood.org](mailto:newcomer@spenceneighbourhood.org)

## Community Sports Program

Southside basketball academy is coming back monthly for clinics starting September 15, grade 7 and up , free to play soccer is still Tuesdays-Fridays ages 11-17 5-7 pm and under 11 Saturdays 12-1:30p.m. Reach out to [sport@spenceneighbourhood.org](mailto:sport@spenceneighbourhood.org) for additional information. We will be having a few different programs for Sport coming soon.

## Youth Employment Hub

The **First Jobs 4 Youth** SNA's Youth Employment Hub's First Jobs 4 Youth is running our Winter 2022 Session starting in November. We will be taking 15 youths aged 18-29 who are not in school. Visit our website and fill out the application online or drop off at office room # 102 West End Commons. 365 McGee Street or Email :First Jobs 4 Youth Coordinator Email: [aaron@spenceneighbourhood.org](mailto:aaron@spenceneighbourhood.org)

**Youth Crew** is open and is performing essential services at the West End Commons. Contact Leslie at [firstjobs@spenceneighbourhood.org](mailto:firstjobs@spenceneighbourhood.org) or call 204-801-6740 for all other inquiries.

## WE24 Overnight Safe Space

Monday - Sunday  
11:00 pm - 7:00 am  
430 Langside - MERC  
Contact Mel - WE24 manager at  
Email: [mel@spenceneighbourhood.org](mailto:mel@spenceneighbourhood.org)

## Environment & Open Spaces

The consistent rain this summer has led to wonderful growth in your community gardens. The children's garden near the MERC is especially bountiful, check out the giant sunflowers! Last few days have been spent planting many perennials that were generously donated; keep your eyes peeled for more raspberries & roses, hydrangea & cherries throughout the neighbourhood.

For more info contact [greenimage@spenceneighbourhood.org](mailto:greenimage@spenceneighbourhood.org) or leave a message at (204) 783-5000 x 102

## Community Greenhouse

Work on greenhouse site is coming along, we are currently installing a brick patio. A toilet has been placed onsite for gardeners, volunteers & the general public. We have started planting fall crops of squash, melons & peppers. Garden party coming soon! Open hours at greenhouse (689 Maryland) suspended till fall.

Contact [greenhouse@spenceneighbourhood.org](mailto:greenhouse@spenceneighbourhood.org)

**COMMUNITY COMMITTEE MEETING - KEEP YOUR EYE ON SOCIAL MEDIA FOR NEXT DATE- ONLINE**  
**FOR MORE INFORMATION VISIT OUR WEBSITE: [WWW.SPENCENEIGHBOURHOOD.ORG](http://WWW.SPENCENEIGHBOURHOOD.ORG) OR CONTACT:**

## Holistic Housing

615 Ellice  
Contact: Housing Coordinator at  
204-783-5000 ext.105  
[housing@spenceneighbourhood.org](mailto:housing@spenceneighbourhood.org)

## Community Connecting

615 Ellice  
Contact: Community Connector at  
204-783-5000 ext.106 or  
[safety@spenceneighbourhood.org](mailto:safety@spenceneighbourhood.org)

## Community Economic Development

365 McGee  
Contact: Youth Employment Hub  
Coordinator at 204-801-6740 or  
[firstjobs@spenceneighbourhood.org](mailto:firstjobs@spenceneighbourhood.org)

## Youth & Families

430 Langside  
Contact: Youth Programs Manager at  
[newcomer@spenceneighbourhood.org](mailto:newcomer@spenceneighbourhood.org)

## Environment and Open Spaces

615 Ellice  
Contact: EOS Coordinator at  
204-783-5000 ext. 102 or  
[greenhouse@spenceneighbourhood.org](mailto:greenhouse@spenceneighbourhood.org)

