



SPENCE NEIGHBOURHOOD ASSOCIATION NEWSLETTER

DECEMBER 2020

SPENCE NEIGHBOURHOOD HOMEBUYER ASSISTANCE PROGRAM

SNA looking for 10 families to purchase their first home in Spence!

Do you know a family looking to purchase their first home?

They may be eligible for **up to \$14,000** through the new Spence Neighbourhood Homebuyer Assistance Program, SNHAP!

SNHAP puts the rising cost of homeownership within reach of qualifying families who may be able to afford the monthly costs associated with owning a home, but who may have difficulty saving for a down payment.

→ Our second intake has begun, with revised criteria:

Who is eligible?

- Total household income must be between **\$35,000 - \$75,592**.
- Families must not have owned a home within the last five years.
- Families must have at least two people, at least one of whom is a dependent (a dependent can be someone under the age of 22, or under 26 if registered in full-time study).

What do qualifying families get?

- Down payment assistance up to \$12,500, which can cover an entire 5% down payment!
- Up to \$1,500 to help pay those pesky closing costs, such as land transfer taxes and legal fees.
- Become a homeowner in a welcoming community of new neighbours!

What are the requirements?

- Maximum home price is \$250,000.
- The home must be within the Spence neighbourhood boundary.
- The family must live in the home for at least the first 10 years.
- Must attend a series of home readiness workshops.

Further requirements and eligibility criteria apply. Please review the program application form for a complete list.

How to apply:

Visit our website to download a PDF application form:
spenceneighbourhood.org/snhap

Paper applications are posted outside, next to the front door of the SNA office:

Available Mon / Wed / Fri, 12pm-5pm.
615 Ellice Ave. (corner of Ellice and Maryland).

Contact us: housing@spenceneighbourhood.org

204-783-5000 Ext. 105

Dial 105 while the phone menu is playing.
Please leave a voicemail and we will return your call.

Help us find some new neighbours with SNHAP!

IN THIS ISSUE

PAGE 2
RESOURCES/PROGRAMS/SERVICES
DONATIONS NEEDED
PAGE 3
COLORING ACTIVITY
PAGE 4
PROGRAMS



COMMITTEE MEETINGS - HOSTED ONLINE - TOGETHER - DECEMBER 16, 2020: 6 PM - 7:30 PM
TO JOIN: [HTTPS://MEET.GOOGLE.COM/FMI-PJXD-BDC](https://meet.google.com/FMI-PJXD-BDC) OR BY PHONE +1 226-317-4820 (PIN: 257469448)

RENTAL SAFETY COORDINATOR

Eviction Support
Tenant-Landlord Mediation
RTB Support
Hydro Arrears
Bedbug Support
...And more!

Cheryl



Cheryl Spencehousing



rentalsafety@spenceneighbourhood.org



Spence
Neighbourhood
Association



HOMELESSNESS OUTREACH MENTOR

Are you currently experiencing homelessness or couch surfing?

Jasmine

Cell: 204-999-4485

615 Ellice Ave
Corner of
Ellice & Maryland

row@spenceneighbourhood.org



PLEASE CALL OR DROP IN TO BOOK AN APPOINTMENT



Spence
Neighbourhood
Association



Harm Reduction & Hygiene Supplies

DISTANCED DOOR SERVICE EVERY
MONDAY, WEDNESDAY, FRIDAY 10AM-4PM
TUESDAY AND THURSDAY 4PM-7PM AT

231 ISABEL STREET
(CENTRAL NEIGHBOURHOODS WINNIPEG)



Knock For:

- Snacks/Hot Drinks To Go
- Safer Substance Use Kits
- Safer Smoking Kits
- Hygiene Supplies Kits
- Safer Sex Supplies Kits
- Menstrual Care Kits



Have You Been Dreaming About Owning Your Own Home?

Receive up to
\$14,000
toward the purchase
of a home in Spence!

Second Intake Deadline: Wednesday,
January 13, 2021
4:00 PM

Conditions apply
Eligible income: \$35,000-\$75,592

See spenceneighbourhood.org/snhap
for details!



SNA SPORTS PRESENTS

HEALTHY HABITS AT HOME

GET MOVIN MONDAYS

TRAINING TUESDAY

MID-WEEK MINDFULNESS

SPORT SKILL THURSDAY

SEIZE THE WEEKEND

FOLLOW US ON SOCIAL MEDIA FOR DAILY POSTS AIMED TO
GET YOU UP AND MOVING AT HOME!!!

WEEKLY PRIZES TO BE WON BY SPENCE
NEIGHBOURHOOD COMMUNITY MEMBERS



[@SNASPORT2020](https://www.instagram.com/SNASPORT2020)

[f SNA SPORT](https://www.facebook.com/SNA.SPORT)



Free Snow Removal Service
for Local Senior Residents

Youth Crew is able to provide
free week day snow removal
services for local seniors.

Give Ana or Leslie a call at
204-801-6740 or email
ana@spenceneighbourhood.org



IN THE NEXT FEW
WEEKS, LOOK OUT FOR
THE SNA VAN GIVING
OUT MEALS AROUND
THE SPENCE
NEIGHBOURHOOD!

UPDATES WILL BE
POSTED ON OUR
FACEBOOK PAGE.

DONATIONS NEEDED THANK YOU!

WE24 - Jackets, Socks, Shoes/Boots, Toothbrushes.
Tooth Paste, Deodorant, Soap, Razors, Bottled
Water, Back Packs, Granola Bars, Individual Snack
Items, Mitts and Hats

All donations can be dropped off at 430 Langside (MERC)

Spence Neighbourhood Association (SNA):

615 Ellice Avenue (Head Office):

Community Connecting, Environment & Open Spaces, Finance, Homeless
Outreach, & Housing.

430 Langside Street (Magnus Eliason Recreation Centre - MERC):

Building Belonging, Children, Newcomer Youth Outreach, West End 24
Hour Safe Space, & Youth Drop-In.

365 McGee Street (West End Commons):

First Jobs 4 Youth, Wahkohtowin Strengthening Families Program, &
Youth Crew.

231 Isabel Street (Central Neighbourhoods):

Gang Action Interagency Network (GAIN)

350 Spence Street (Axworthy Health & RecPlex):

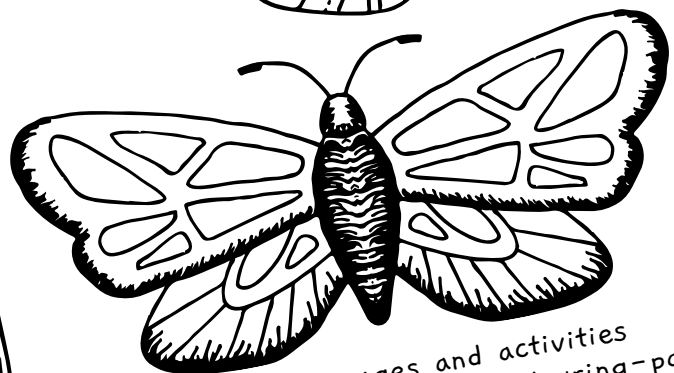
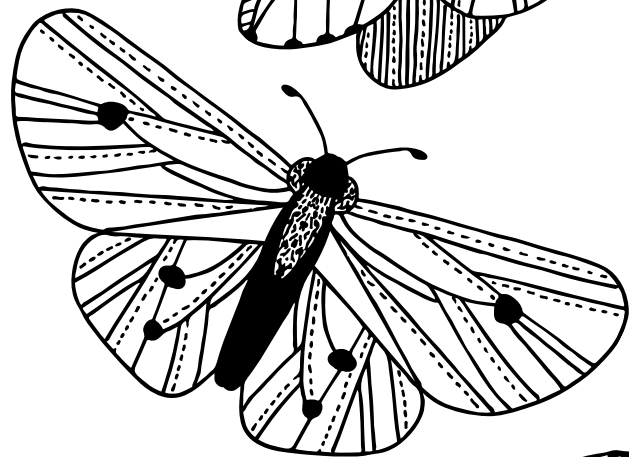
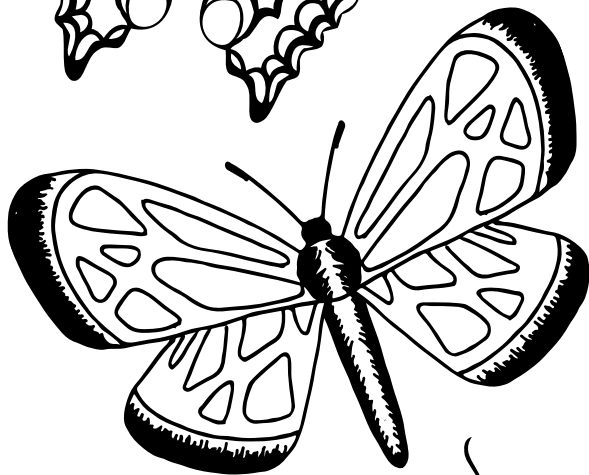
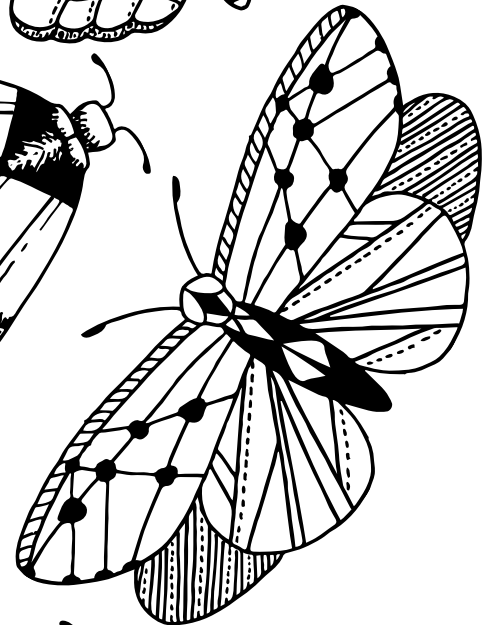
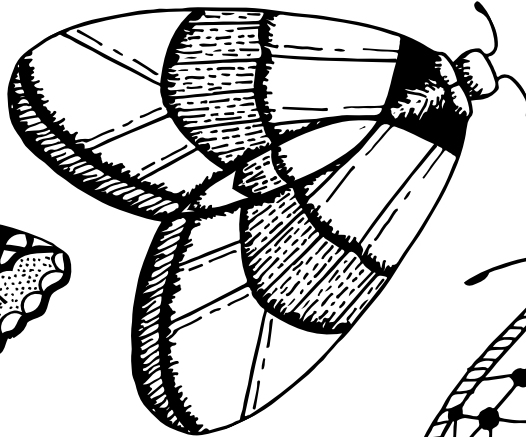
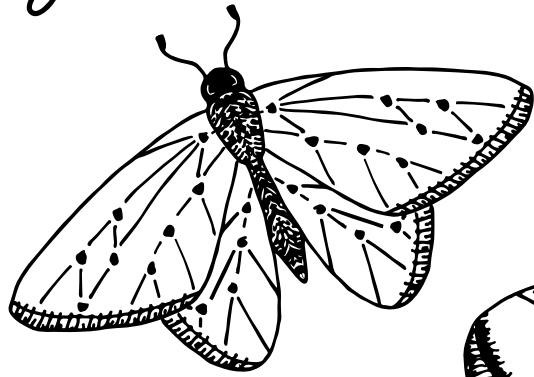
Community Sports Program

Phone: 204-783-5000 | Email: liaison@spenceneighbourhood.org |

Website: www.spenceneighbourhood.org



SUMMER MEMORIES
COLORING ACTIVITY
Brilliant Butterflies



For more coloring pages and activities
go to www.spenceneighbourhood.org/colouring-pages

PROGRAMS

CHILDREN & YOUTH PROGRAMS

Building Belonging

Program registration forms are available at the MERC-430 Langside St. or on our website. Families in the Spence neighbourhood can register to receive weekly activity packages delivered until programming starts up again. Packages include an art activity, colouring supplies and donated books, games and sports equipment. Contact us at buildingbelonging@spenceneighbourhood.org

Newcomer/Youth Program

Our youth drop in program will keep delivering Cultural Recipe packages every Friday. If you are a youth between 12-17 years old and want to get a package you can contact Amina at newcomer@spenceneighbourhood.org or through Facebook: Spence Merc. We are here to support you!

Community Sports Program

We will be having a virtual sport program on our social media pages. These will include daily posts that surround that particular day's theme (fitness, healthy, mindfulness, and sport). Daily Facebook. Twitter, Instagram Posts on Active Living Also can be found on our website.

Community Outreach Service

Monday - Friday
10:00 am - 2 pm

In the next few weeks, look out for the SNA van giving out meals around the Spence neighbourhood! Updates will be posted on our Facebook page.

First Jobs for Youth

The First Jobs 4 Youth program is providing remote services. The Coordinator can be reached at aaron@spenceneighbourhood.org. Youth Crew is open and is performing essential services at the WestEnd Commons. Contact Leslie or Ana at firstjobs@spenceneighbourhood.org or call 204-801-6740 for all other inquiries.

WE24 Overnight Safe Space

Starting December 1, 2020
Monday - Sunday
11:00 pm - 7:00 am
430 Langside - MERC

**Annual
General Meeting
coming up on
January 21, 2021**

MORE WAYS TO ENGAGE WITH YOUR COMMUNITY

Central Neighbourhoods Winnipeg

We are offering online learning in suicide prevention, anti-racism, and door service.

For upcoming events check us out on social media!

Website: <http://cnwpg.org/>
Facebook: <http://facebook.com/cnwpg/>
Instagram: @centralneighbourhoods
Twitter: @cnwpg

Wahkohtowin Strengthening Families Program

Please feel free to contact our site manager Seth at (204) 471-0940 if you have any questions, are interested in registering for the next session, or if you would like to refer a family.

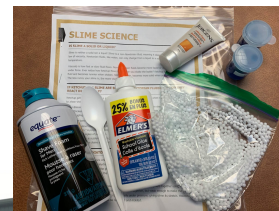
Holistic Housing

SNA Homebuyer Assistance Program
For more information: www.spenceneighbourhood.org/SNHAP
All other programs are working remotely.
See advertisements for contact information for Homelessness Mentor and Rental Safety Coordinator.

housing@spenceneighbourhood.org
204-783-5000 Ext. 105

Environment and Open Spaces

All programs are working remotely until March 2021.
Contact: greenimage@spenceneighbourhood.org



Thanks to S.I.G.N. Foundation, Art City Outreach, GoZen, U of W Wai Chiwaanank Centre's Science Explorers, WE24 Mealtrain donors, for your wonderful donations that help us help the community.

COMMITTEE MEETINGS - HOSTED ONLINE - TOGETHER - DECEMBER 16, 2020: 6 PM - 7:30 PM

TO JOIN: [HTTPS://MEET.GOOGLE.COM/FMI-PJXD-BDC](https://meet.google.com/FMI-PJXD-BDC) OR BY PHONE +1 226-317-4820 (PIN: 257469448)

Holistic Housing Committee

615 Ellice
Contact: Housing Coordinator at
204-783-5000 ext.105
housing@spenceneighbourhood.org

Community Connecting Committee

615 Ellice
Contact: Community Connector at
204-783-5000 ext.106 or
safety@spenceneighbourhood.org

CED Committee

365 McGee
Contact: Youth Employment Hub
Coordinator at 204-783-5000 ext.115 or
firstjobs@spenceneighbourhood.org

Youth & Families Committee

430 Langside
Contact: Youth Programs Manager at
204-783-5000 ext. 111 or
mungala@spenceneighbourhood.org

Environment and Open Spaces Committee

615 Ellice
Contact: EOS Coordinator at
204-783-5000 ext. 102 or
greenimage@spenceneighbourhood.org

**Spence
Neighbourhood
Association**

